

## Agilent WireScope Rev 3.2.8 Download Instructions

Here are instructions for downloading the update for ScopeData Pro Rev 3.2.8. This loads all the software necessary to update the WireScope 350 to this revision. The whole process is described below.

Go to [www.wirescope.com](http://www.wirescope.com).

Select N2600A Wirescope 350

- **NEW: N2640A WireScope Pro**  
The new WireScope Pro extends the WireScope 350's capabilities to Category 6a/7 and Class F cable certification, and reduces test times dramatically.
- **N2600A Wirescope 350**  
The WireScope 350 is a Category 6/Class E hand-held network cable analyzer offering color touch screen, outstanding test performance, ease of use and graphic reporting.

Then select ScopeData Pro Software

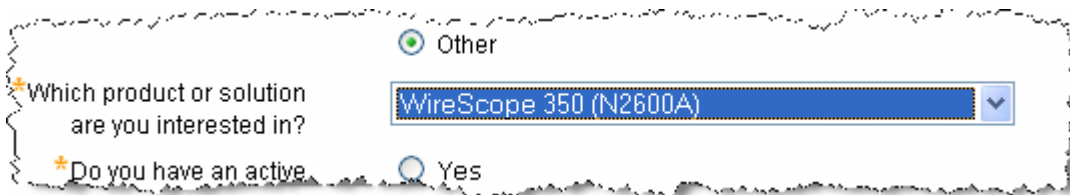
- **N2597A Fiber SmartProbes**  
Multimode or Singlemode Fiber SmartProbes simplify installation testing and certification in mixed twisted pair and fiber optic installations.
- **ScopeData Pro Software**  
ScopeData Pro addresses this need with professionally designed report formats incorporating logos, proportionally formatted text, circuit schematics and plots when plot data is available.
- **FrameScope 350 and WireScope 350 Professional Test Kits**  
Agilent Technologies now offers network & cabling professionals the hottest combination of network, copper and fiber testing tools all bundled together in a

Scroll down and select Software Upgrade Package

- **Technical Support** - Manuals & Guides, Downloads, Change Notices, Safety Notes, FAQs ...
- **Library** - Data Sheets, Brochures, Application Notes ...

Software Update: <b>Software Upgrade Package</b>	2006-01-19	
Download the Latest Software Upgrade Package for your WireScope/FrameScope 350 Product - version 3.2.8		
Program/Utility: <b>Software Upgrade Utility Guide for FrameScope / WireScope 350</b>	2002-11-07	3.26 MB <a href="#">order a copy</a>

At this point you will need to fill out the information requested. Be sure to select WireScope 350 (N2600A) in the product interest box.



Other

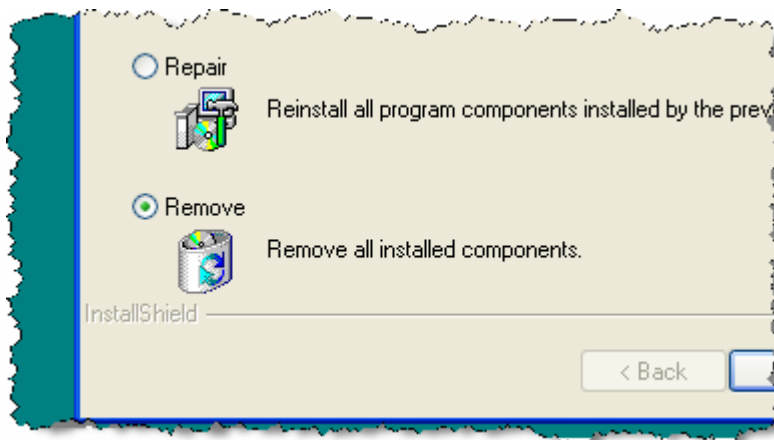
\*Which product or solution are you interested in? WireScope 350 (N2600A)

\*Do you have an active Yes

That will lead you to the download page. (Add this web page to your favorites for later.) Click on English (8 MB) to get started. You can simply run the software from the web site. You do not need to “save” it.



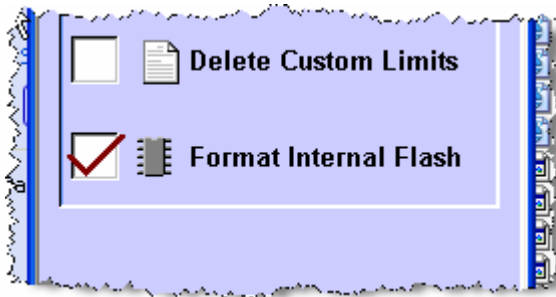
If you have existing ScopeData Pro software on your PC, it must be uninstalled. To do this, continue to download the software and let the InstallShield discover that a version of ScopeData Pro already exists. Select Remove to uninstall your current ScopeData Pro. You will need to shut down your computer and restart as requested.



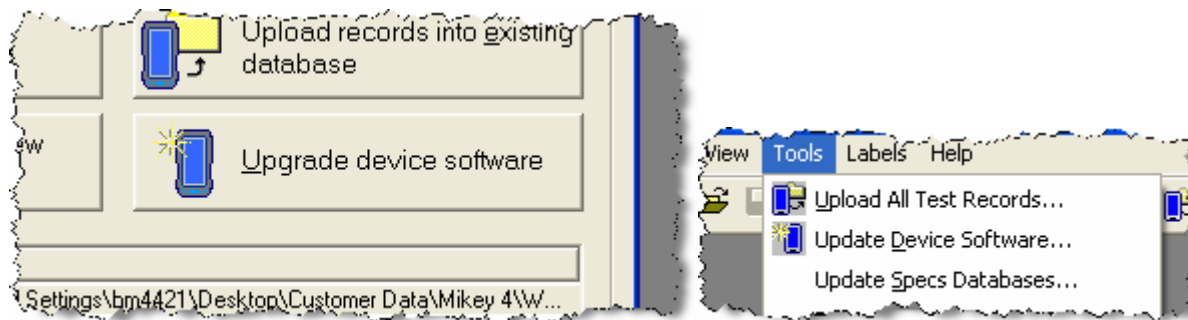
Next, download the software again and select the “Typical” install. Proceed with the install following the standard prompts.

Now, attach your WireScope to the PC with the USB cable. Use ScopeData Pro to upload any test results still on the WireScope if necessary.

**IMPORTANT:** After results are uploaded, reformat the internal flash on the WireScope. On the WireScope go to System -> Restore Default Settings and put a check mark in the Format Internal Flash box. Press OK and follow the prompts.



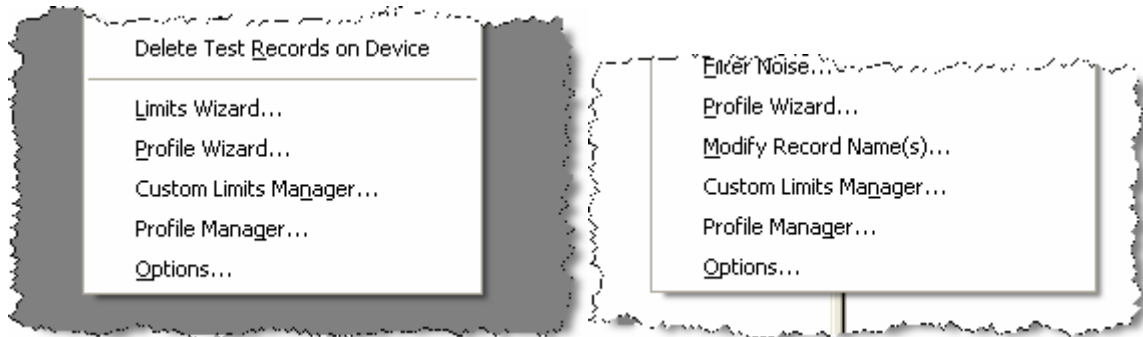
Now use ScopeData Pro to update the WireScope. The update selection is either on the opening window or in the Tools menu.



When the WireScope is updated, you may need to set it again to Expert Mode. Do this in System -> User Interface settings.



If you use profiles on the WireScope, set them once in ScopeData Pro and download them every time you update the WireScope itself. If you do not use profiles, ignore this step. Once ScopeData Pro is loaded, you will see a Profile Wizard and a Profile Manager in the Tools directory. Use the Profile Wizard to recreate on your pc all the profiles you typically use in the WireScopes. Create them based on the settings in the WireScopes. Once you have created them on the PC, you can use the Profile Manager to download these profiles to the WireScopes right after you do the upgrades. Depending on whether you have a file open, the selection could look like either one of these.



The Dual Remote will be updated the first time you do a field calibration.

End of procedure.